



January 2012

## Like WEC on Facebook and win \$50!



If you click to "like" Wiregrass Electric Cooperative's profile on Facebook during the month of January, you will be automatically entered into a drawing for \$50. Finding WEC on Facebook is easy, and becoming a fan will allow you to see important updates about your cooperative whenever you check your Facebook account. Here's how to enter:

- 1 Open [www.facebook.com](http://www.facebook.com) in your browser or on your smartphone.
- 2 On the top of the page, enter "Wiregrass Electric Co-op" into the search bar and press enter.
- 3 At the top of our page, next to the words "Wiregrass Electric Co-op," press the "Like" button.
- 4 That's it! If you are a WEC member, you will be entered into a drawing for \$50!

The drawing will be held in early February, and the winner will be announced on Facebook and in *Alabama Living!*

## Your High School Junior could earn a FREE trip to Montgomery or Washington D.C.!



Wiregrass Electric Cooperative is searching for outstanding high school juniors to represent our area at the Washington Youth Tour in June, and the Montgomery Youth Tour in March.

- Week-long trip to Washington, D.C.
  - **All expenses paid**
  - Tours of the Capitol, other landmarks
  - Meet elected officials, hear speakers, meet teens from across the country, and take part in many exciting activities.
- Montgomery Youth Tour is a three-day trip to our state's capital with tours, leadership workshops and entertainment.
- **NEW TRIP DATES:**  
Montgomery March 6–8 • Washington June 16–21

For information and application:

**CALL:** Cary Hatcher at 800-239-4602 • **EMAIL:** [wec@wiregrass.coop](mailto:wec@wiregrass.coop)  
**or CLICK:** [www.wiregrass.coop](http://www.wiregrass.coop) (and click to visit us on Facebook!)

**Deadline for entry is Jan. 13, 2012!**

To be eligible, at least one parent or legal guardian must be a member of Wiregrass Electric Cooperative

# Need help paying for college?

## *Apply for the Electric Cooperative Scholarship!*

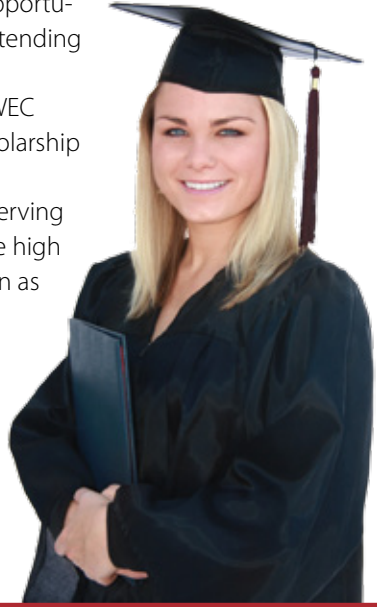
Wiregrass Electric Cooperative offers a scholarship opportunity to help high school seniors achieve their goal of attending college.

Area high school seniors who are a dependent of a WEC member have an opportunity to apply for a \$1,000 scholarship through the Electric Cooperative Foundation.

Each year the foundation awards scholarships to deserving seniors from each cooperative represented. Any eligible high school senior entering an accredited learning institution as a full-time student may apply.

Seniors may receive an application from their high school guidance counselor, at any WEC office, or online at [www.wiregrass.coop](http://www.wiregrass.coop).

**Deadline for completed applications is March 16, 2012.  
APPLY TODAY!**



## Undeliverable 1979 Capital Credit refunds from WEC now posted

As a cooperative, Wiregrass Electric does not earn profits like a normal corporation. Instead, WEC is member-owned, and as a member you are entitled to a share of the margins earned by selling electric services. We refer to these margins as capital credits, and they reflect each member's ownership in WEC.

When these funds are not needed for day-to-day operations, WEC issues a capital credit refund. Recently, the cooperative mailed checks to refund capital credits for the year 1979. Several of those checks were returned as undeliverable.

We have posted the names from all undeliverable checks on our website ([www.wiregrass.coop](http://www.wiregrass.coop)) and at all WEC offices. If you were a member in 1979 and did not receive a capital credit refund, please check

these sources for your name.

If your name is listed, please call 800-239-4602, or come to the Hartford office for instructions on how to claim your check.

You will need some documentation in order to claim a check:

- You must provide a valid driver's license or state ID if you are the member of record.
- If the member of record is deceased, you must provide a death certificate plus one of the following:

1. Letters of Administration, or
2. Letters of Testamentary, or
3. If you do not have item 1 or 2, please provide evidence that you are the legal and authorized representative of the estate.

This information must be presented at WEC's Hartford office. If you have any questions, please contact us at 800-239-4602.



**WIREGRASS**  
ELECTRIC COOPERATIVE

A PowerSouth Energy Cooperative

[www.wiregrass.coop](http://www.wiregrass.coop)  
1-800-239-4602

**Toll Free OUTAGE HOTLINE:**

**1-888-4-MY-OUTAGE**

**OR 1-888-469-6882**



Scan this QR code on your mobile device to access your WEC Dashboard!